



THE ART
WORLD IS
OUR WORLD

**ARTS
EMERGENCY**

Welcome and thank you from the Youth Collective

Let's start by saying that we're so happy to share the day with you, celebrating Arts Emergency in all its glory. What a journey we've been on together, acknowledging along the way that **no one should go on their journey alone**. It's genuinely incredible to think of everything we've built over the past 10 years. Thank you to all of our Young Community - we're what makes Arts Emergency so special and unique.

Existing in a world that wasn't designed for us isn't easy, but as always - we have each other and we've shown that **we're far more powerful when we come together**. The resistance, commitment and sheer passion of our community is admirable and being on this path together is a privilege.

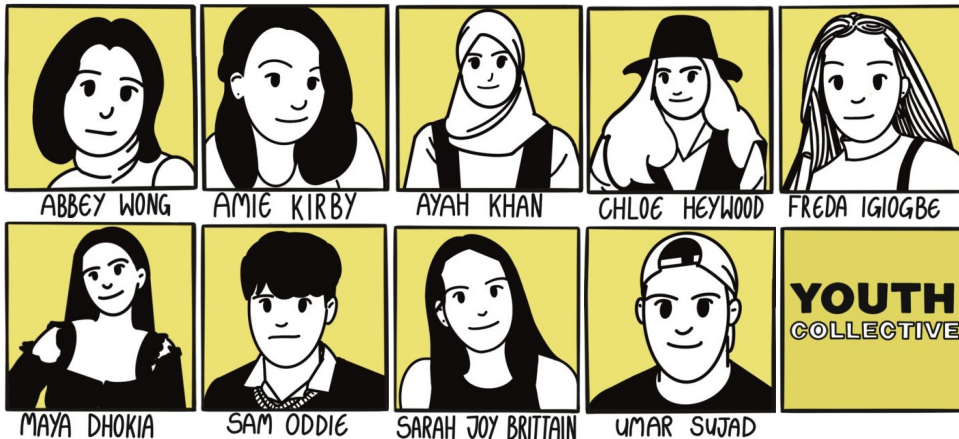
It goes without saying that Arts Emergency has changed lives - and it's all thanks to the work of staff, volunteers, and, us, the amazing Young Community. From mentoring programmes, to work experience, to making friends and networking.

Over the past 10 years Arts Emergency has created a network of **9000 creative and cultural professionals** for young people to call upon. The Young Community is now made up of **1000 young people** and last year alone **3000 mentoring sessions** were run. This of course wouldn't be possible without the time, generosity and wisdom of each and every supporter - we are forever grateful that every single person involved in Arts Emergency puts their heart and soul into what they do; **artwork is heart-work**, and **art is joy**.

When times get difficult, it's easy to question, what is it all for?

But we know the answer: it's for an even playing field, a right to take up space, to dream, and live the life we deserve and have worked so hard for.

The Art World is our World!



Contents

Event schedule	3
Event programme details	4-5
About the venue (transport links)	6
Youth Collective manifesto	7

NO-ONE SHOULD GO ON THEIR JOURNEY ALONE.

The Schedule

Space	11:45-12:00	12:00-12:30	12:40-13:10	13:10-13:40	13:40-14:10	14:20-14:50	14:50-15:20	15:30-16:00	16:10-16:40	16:40-17:10	17:20-17:50
0 The Creation Station			Dreaming of alternative futures: Creative writing drop-in with Nasima Bee								
1 The Theatre					Mental health for creatives: Top tips with Short Supply		Freelancing 101: Top tips with Short Supply	Film Screenings + Q&A: with Sam Oddie and The Youth Collective	Conversations across creatives: Keynote panel with Lamin Tourey, Julie Hesmondhalgh, Perminder Mann, Hattie Kongaunruan, and chaired by Amie Kirby		Bloody Elle! Musical performance by Lauryn Redding
3 The Networking Hall		'Ave a Natter: Speed mate-ing with Chloe Heywood		Photographer shooting at the streamer garland: with photographer Sarah Joy Brittain		Careers Clinic: Advice drop-in					
1st floor meeting room The Zine Zone			Making your manifesto: Zine making drop-in with Korantema Anyimadu								
Ground floor foyer The Café & Open Mic	Arrivals!		Lunch is open: grab a delicious meal from Contact's café using your complementary token!								

Open all day:

The Open Mic



Ground floor foyer
Share your skills with our all-day open mic!

Games + Open Wall



1st floor foyer
Expect games, creative materials, and an open wall for your creative expression!

The Quiet Room



2nd floor 'Contemplation Room'
Please ask stewards if you need help finding this space!

Photo Opportunity



Space 3
Snap some pictures in front of a streamer garland! Our trusty photographer, Sarah, will be there from 13:10 to 14:10!

What's On?



'Ave a Natter: Speed mate-ing with Youth Collective member Chloe Heywood

Start the day off by having a good old natter as Youth Collective member, Chloe, gives some fun ice-breakers and talking points to help you make some new pals!



Dreaming of alternative futures: Creative writing drop-in with Nasima Bee

Are you a dreamer? Do you think the world could look a bit different? Acclaimed Manchester poet and performer, Nasima Begum - Nasima Bee onstage - will be leading a drop-in session on how to use creative writing as a tool for dreaming of alternative futures!



Nasima Begum (she/her), or Nasima Bee onstage, is a performance poet, producer and creative practitioner. She's a trustee for Manchester's Young Identity, a collective of poets, dancers and musicians. Nasima uses art as a means of activism and her work is an exploration of loss, a celebration of femininity and an observance of the world. Nasima is currently researching and developing her first script exploring what it means to be a British Muslim woman in the current political climate with the support of Factory International.

Find out more: <https://www.instagram.com/nasimabee poet>

Make your own manifesto: Zine making drop-in with Korantema Anyimadu

At Arts Emergency we love a manifesto. They're a brilliant way to make powerful statements that say something about who you are and what you want. Join Arts Emergency's own Korantema, as she leads a relaxed, drop-in session of zine-making exploring how *your* manifesto might look!

Arts Emergency's very own! **Korantema (she/her)** is a curator and a zine maker. Her work focuses on storytelling, justice and identity. She was a Grrrl Zine Fair Artist in Residence in 2020 and her zines exploring Black folks, hair and heritage have been featured in gal-dem and Vice Magazine. @black.hair.stories

Find out more: www.korantema.com,
www.instagram.com/black.hair.stories



Mental Health for Creatives & Freelancing 101: Top tips with Short Supply

These two sessions will be led by Northern powerhouses, Mollie Balshaw and Rebekah Beasley - aka Short Supply! The duo founded Short Supply to provide practical advice and opportunities to new and emerging artists. They'll be chatting to us about how to take care of yourself, practically and mentally, as an emerging creative.

Mollie Balshaw (they/them) and **Rebekah Beasley (she/her)** are the Co-Directors of Short Supply CIC, an artist-led organisation that creates opportunities for emerging artists within an increasingly competitive industry, producing projects that address the barriers creative people face to education, employment, stable income, housing and good mental health. The duo programme the annual MADE IT graduate art prize showcase, and are most recently delivering a series of workshops for MMU graduates relating to self-confidence.

Find out more: <https://www.shortsupply.org>



Careers Clinic

Join some of Arts Emergency's professional networks for an informal drop-in advice session. Got a burning question for a TV script writer? Want to know more about the fashion world? Come along to this session and see if someone there can help!



Film Screenings + Q&A with the Youth Collective

Film 1: Youth Collective Film

Join us, the Youth Collective, for a behind-the-scenes film into what each of us do day to day as creatives.



Film 2: Existential Dread & Other Vibes by Sam Oddie

Longing for the past whilst anxiously waiting for the future, Existential Dread & Other Vibes is a film about Post-Graduate Despair - A phenomenon facing young people, questioning their place in the world after finishing the last big milestone before adulthood.

Is there a world beyond compromise for young people, could the future we planned for be possible in an ever changing world?



There will be an opportunity to ask questions after the screenings!

Conversations across creatives: Keynote panel with Lamin Touray, Julie Hesmondhalgh, Perminder Mann, Hattie Kongaunruan, and chaired by Amie Kirby

Join Youth Collective member, Amie, as she speaks to Lamin, Julie, Perminder, and Hattie. These creatives all work within different fields across the arts and are at various stages of their career. In coming together, we'll have conversations about making the art world a fairer place, while celebrating the exciting talent of people across creative sectors. After all - we are far more powerful when we come together!



Julie Hesmondhalgh (she/her) is a big supporter of Arts Emergency's work so we are thrilled to have her on this panel. Best known for gracing our tellies on Coronation Street, the actress has had an extensive career across the stage and screen. We're looking forward to her forthcoming book, "An Actor's Alphabet: An A to Z of Some Stuff I've Learnt and Some Stuff I'm Still Learning".

Find out more: <https://twitter.com/juliehes>



Perminder Mann (she/her) is the Chair of Arts Emergency's Board of Trustees, as well as CEO of Bonnier Books UK. Appointed CEO in 2017, Perminder has spearheaded the evolution of Bonnier Books UK into one of the country's leading publishers: achieving record profits and delivering a host of bestsellers. Under her leadership, Bonnier Books UK has worked to accelerate progress in the industry through its Inclusion & Representation Action Plan.

Find out more: <https://www.arts-emergency.org/noticeboard/22/09/introducing-our-new-chair-perminder-mann>



Hattie Kongaunruan (she/her) is a sculpture artist whose practice focuses on upcycling furniture. Her work largely looks to transform chairs found on the street or from recycling sites into whimsical characters and surreal structures, reacting to their salvage from landfill. Hattie is also a skilled producer and facilitator, working with organisations such as Jerwood Arts, FutureEverything, and Manchester Museum on their co-curated South Asia Gallery.

Find out more: <https://www.instagram.com/byhathaikan>



Lamin Touray (he/him) is a British-Gambian actor from Manchester. He has appeared in a variety of programmes across stage, screen, and radio - including, Everything I Know About Love (2022) and Waterloo Road (2023). He is involved in Breaking Barz MCR, a series of events at Manchester's Old Abbey Taphouse, celebrating the life and legacy of Len Johnson through live music.

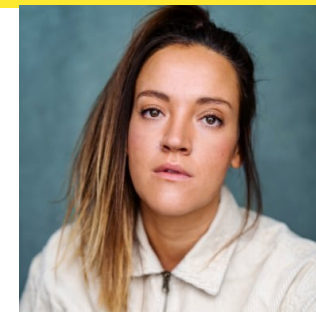
Find out more: <https://linktr.ee/lamintouray1996>

Bloody Elle! Musical performance by Lauryn Redding

To finish the day, we've got ar' lass Lauryn, a writer, composer, and actor whose debut play Bloody Elle (written and performed by Redding), won the Holden Street Theatres Edinburgh Fringe Award. Bloody Elle is a touching tale about being a young queer woman in the North, and was the first show to open at the Royal Exchange theatre when it reopened in 2021.

Lauryn Redding (she/her) is a writer, composer and actor. Her debut play Bloody Elle, which she also composed and performed, re-opened the Royal Exchange Theatre in June 2021 before transferring to the Traverse Theatre in 2022, where it won the Holden Street Theatres Edinburgh Fringe Award. Lauryn is currently one of eight people selected for the 2022 BBC Studios Writers' Academy. She was nominated for Best Composer, Lyricist or Book Writer for Bloody Elle in the 2022 Stage Debut Awards.

Find out more: <https://twitter.com/laurynredding>



About the venue:

The Contact Theatre is situated on **Oxford Road** and is a 20 minute walk to **Oxford Road station**. In the theatre's own words, Contact is:

“Where audiences come to be curious, where the next generation come to be empowered, and where Manchester comes to be together.”

Facilities

The building has full step-free access and disabled toilets on **every floor**. Most toilets are gender neutral, with the exception of the ground floor toilets. There is a **Quiet Room** available for taking breaks on the 2nd floor - please ask a steward if you need help finding this!

Nearest shops/ public facilities

Need to nip out for a snack run or bottle of water? You can find a **Sainsbury's** and a **Morrison's** directly across the road (3 minute walk).

Nearest transport links:

By train...

Oxford Road Station - 15 minute walk
Manchester Piccadilly Station - 25 minute walk
St. Peter's Square Metrolink - 20 minute walk

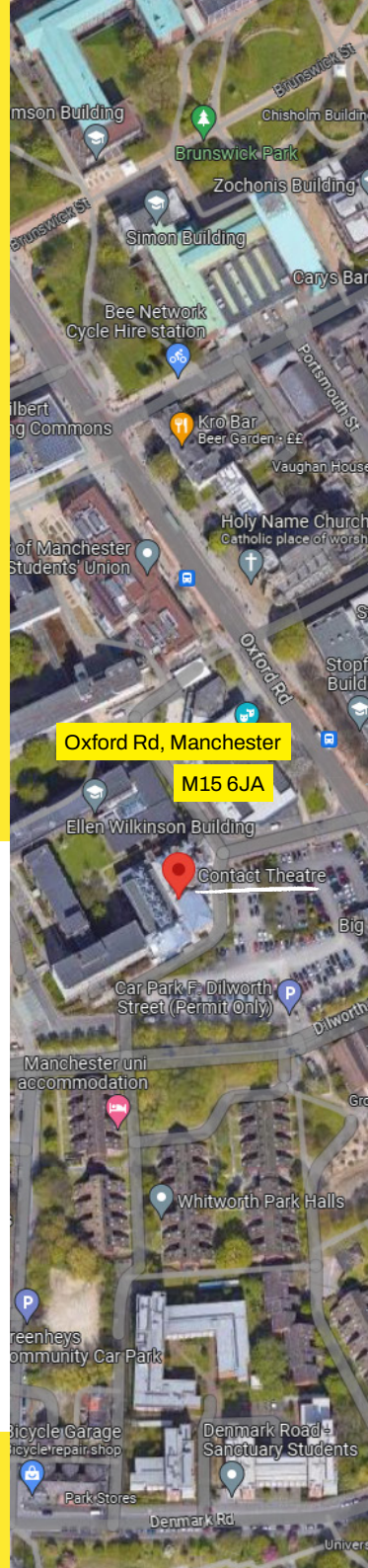
By bus...

There are several regular buses that depart from regular stops along **Oxford Road**. Most go to **Piccadilly Gardens**, where you can then walk to Manchester Piccadilly Station in 5 - 10 minutes. The bus is £2 for a standard single fare.

By car...

Contact Theatre has no visitor car park, so the nearest ones are: University of Manchester car park on Cecil Street, and Q-Park Manchester Hospitals.

Struggling to get around? Use Transport for Greater Manchester's journey planner: <https://tfgm.com/plan-a-journey>



The 'art world' is our world.
Things can change, they have to. **Artwork is heart-work.** No one should go on their journey alone. **Everyone has a part to play when the revolution comes.** We are far more powerful when we come together. Share resources. Pay it forward. **Collaboration not competition.** The arts should not be closed. **Creativity is not the end result. Be led by the process.** **Get stuck in. Art is joy.**

**Youth
Collective
Manifesto**

